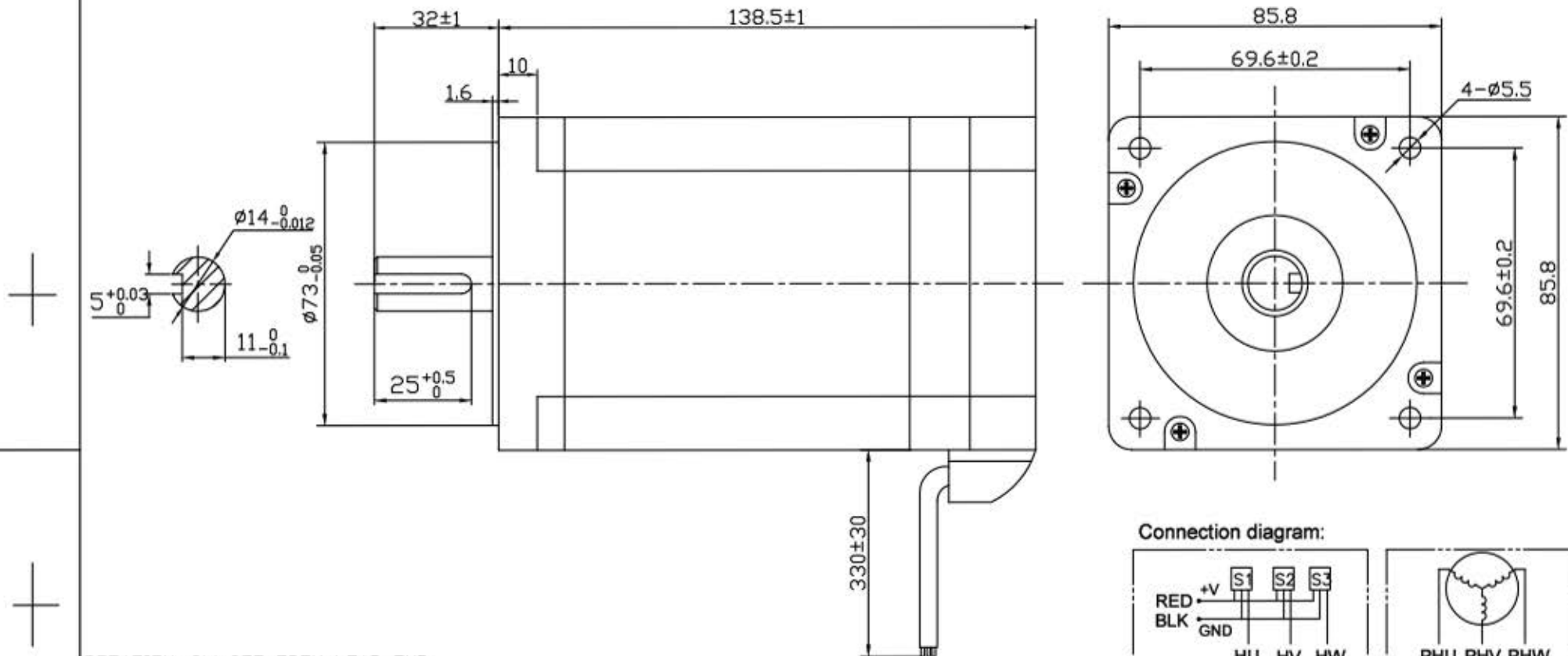


Dimension:  
Unit=mm



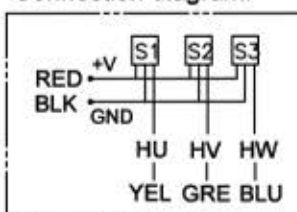
ROTATION: CW SEE FROM LEAD END

MANUFACTUER MODEL	JK86BLS125-X015
NUMBER OF POLES	8
PHASE TO PHASERESISTANCE	0.13 OHMS
NOMINAL VOLTAGE	48 VDC
NO LOAD SPEED	3700±10% RPM
NO LOAD CURRENT	2.8 Amps Max.
RATED TORQUE	2.1 N-m
RATED SPEED	3000±10% RPM
OUTPUT POWER	660 W
BACK EMF CONSTANT	13 V/kRPM
TORQUE CONSTANT	0.124 N-m/A
INSULATION CLASS	B

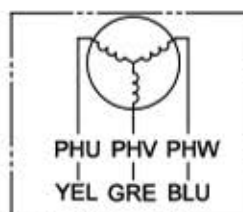
ELECTRICAL CONNECTION TABLE

+5V	RED	紅	UL1007 26 AWG
HALL U	YEL	黃	
HALL V	GRE	綠	
HALL W	BLU	藍	
GND	GND	黑	AF 1.5
PHASE U	YEL	黃	
PHASE V	GRE	綠	
PHASE W	BLU	藍	

Connection diagram:



Hall sensor cable  
Note: hall sensor power supply  
voltage +5 to +20VDC



Wiring cable

REV. QTY. No. SIG. DATE				Title:		常州倍士福机电有限公司
DESIGN CCY 19.01.09 STD.				Specification		
CHECK				CLS.MAK	WEIGHT	SCALE
PROC.				PAGE: 1/1		BF86BLS125-X015
						www.besfoc.cn